

Red Water Pond Road Community Association and Pipeline Road Community

WHY WE SUPPORT MOVING THE THE QUIVIRA (KERR-MCGEE) CHURCHROCK URANIUM MINE WASTE TO THE RED ROCK LANDFILL

December 14, 2023, revised May 13, 2024



- We live between two of the largest abandoned uranium mines on the Navajo Nation and just around the corner from the UNC uranium mill tailings disposal cell – the site of the July 16, 1979 Tailings Spill.
- Some 50 homes in RWPRC and Pipeline Community surround the Quivira Churchrock I and IE Mine (map at right).
- We've occupied our homeland for at least 100 years across four generations, and our families are sick from their exposures.
- Quivira Mine wastes – about 1 million cubic yards – sit at the bottom of a steep slope, and cannot be capped in place safely for permanent containment.
- For decades, we have fought to have these all uranium wastes removed from our community.

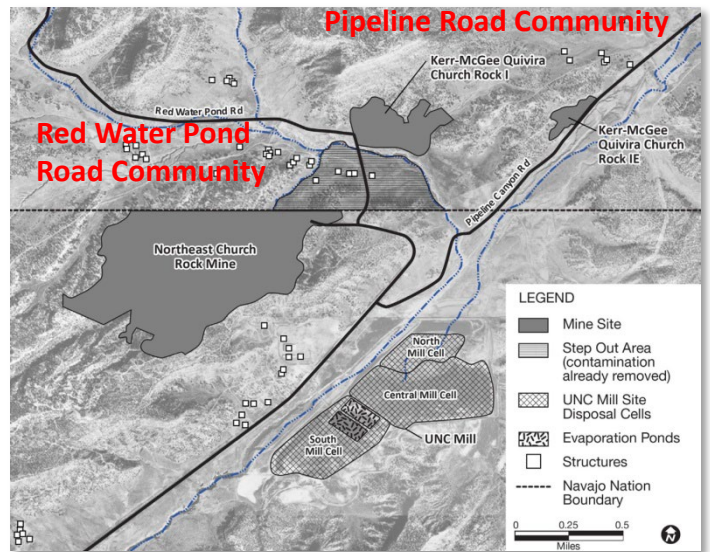
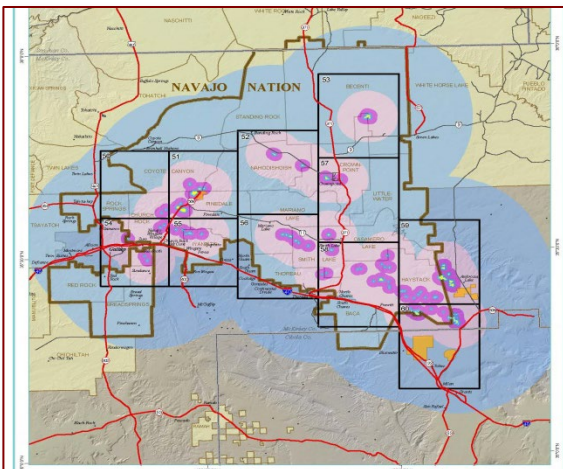
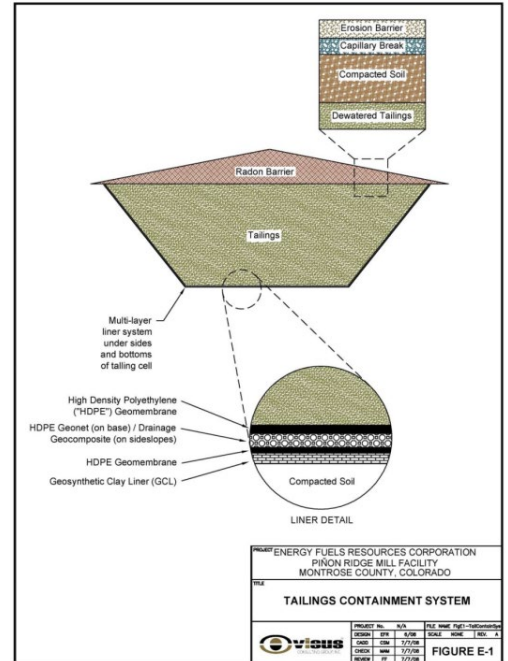




Photo by Susan Gordon

Advantages of Red Rock Landfill (RRL)

- The RRL property would provide a permanent and safe place to dispose of mine wastes from dozens of sites in the Eastern Agency. The site has many advantages:
 - Away from people; few homes within 1 mile of the site
 - On private land, owned by Northwest New Mexico Regional Solid Waste Authority
 - Serves trash collection needs of Cibola and McKinley counties and *the entire Navajo Nation*
 - Has plenty of room to construct an engineered disposal “cell” (diagram at right), whose design would be based on NRC’s “prime option” for uranium mill tailings
 - Mine wastes would not be mixed with municipal wastes
 - Site topography minimizes erosion from wind and water
 - Groundwater is more than 350 feet from surface



- More than 100 abandon mines impact families and communities throughout the Eastern Agency and Grants Mineral Belt (map at left).
- **Mine wastes are not acutely hazardous:**
 - DRY dirt and rocks
 - Uranium was mostly removed
 - NOT high-level nuclear wastes
 - NOT the highly radioactive “transuranic wastes” that are being disposed of at WIPP near Carlsbad.
 - Trucks hauling mine wastes will be covered
- USEPA and other federal, tribal and community stakeholders should *examine alternative transportation routes that avoid trucks traveling through Thoreau*

Many people who live next to these sites want them removed to protect the health of current and future generations.

Please visit our communities to see the Quivira waste dump and Northeast Church Rock Mine. For more info, call Edie Hood at 505-905-0694 or Larry King at 505-979-1411.